



Cattle on Feed

ISSN: 1948-9080

Released July 19, 2013, by the National Agricultural Statistics Service (NASS), Agricultural Statistics Board, United States Department of Agriculture (USDA).

United States Cattle on Feed Down 3 Percent

Cattle and calves on feed for slaughter market in the United States for feedlots with capacity of 1,000 or more head totaled 10.4 million head on July 1, 2013. The inventory was 3 percent below July 1, 2012. The inventory included 6.53 million steers and steer calves, down 3 percent from the previous year. This group accounted for 63 percent of the total inventory. Heifers and heifer calves accounted for 3.78 million head, down 4 percent from 2012.

Placements in feedlots during June totaled 1.59 million, 5 percent below 2012. Net placements were 1.52 million head. During June, placements of cattle and calves weighing less than 600 pounds were 315,000, 600-699 pounds were 232,000, 700-799 pounds were 415,000, and 800 pounds and greater were 625,000.

Marketings of fed cattle during June totaled 1.90 million, 4 percent below 2012. Marketings for the month of June are the lowest since the series began in 1996.

Other disappearance totaled 63,000 during June, 5 percent below 2012.

Number of Cattle on Feed, Placements, Marketings, and Other Disappearance on 1,000+ Capacity Feedlots – United States: July 1, 2012 and 2013

Item	Number		Percent of previous year
	2012	2013	
	(1,000 head)	(1,000 head)	(percent)
On feed June 1	11,077	10,739	97
Placed on feed during June	1,664	1,587	95
Fed cattle marketed during June	1,965	1,895	96
Other disappearance during June	66	63	95
On feed July 1	10,710	10,368	97

Number of Cattle on Feed, Placements, Marketings, and Other Disappearance on 1,000+ Capacity Feedlots – United States: June 1, 2012 and 2013

Item	Number		Percent of previous year
	2012	2013	
	(1,000 head)	(1,000 head)	(percent)
On feed May 1	11,110	10,735	97
Placed on feed during May	2,084	2,052	98
Fed cattle marketed during May	2,017	1,948	97
Other disappearance during May	100	100	100
On feed June 1	11,077	10,739	97

Number on Feed by Class on 1,000+ Capacity Feedlots – United States: July 1, 2012 and 2013

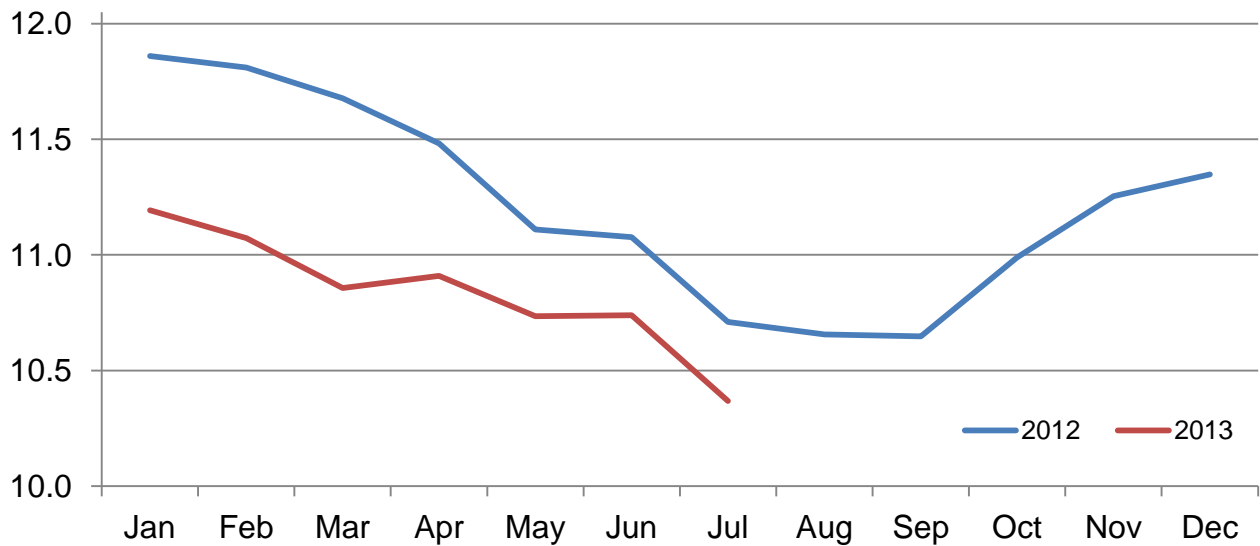
Item	Number		Percent of previous year
	2012	2013	
	(1,000 Head)	(1,000 Head)	(percent)
Class on Feed July 1			
Steers and Steer Calves	6,736	6,527	97
Heifers and Heifer Calves	3,918	3,779	96
Cows and Bulls	56	62	111

Number of Cattle on Feed on 1,000+ Capacity Feedlots by Month – States and United States: 2012 and 2013

State	July 1, 2012	June 1, 2013	July 1, 2013		
			Number	Percent of previous year	Percent of previous month
	(1,000 head)	(1,000 head)	(1,000 head)	(percent)	(percent)
Arizona	279	272	267	96	98
California	480	510	515	107	101
Colorado	970	960	920	95	96
Idaho	200	205	195	98	95
Iowa	620	610	580	94	95
Kansas	2,050	2,060	2,010	98	98
Nebraska	2,270	2,320	2,180	96	94
Oklahoma	320	310	305	95	98
South Dakota	210	215	200	95	93
Texas	2,670	2,630	2,560	96	97
Washington	210	214	203	97	95
Other States	431	433	433	100	100
United States	10,710	10,739	10,368	97	97

Cattle on Feed Inventory on 1,000+ Capacity Feedlots – United States

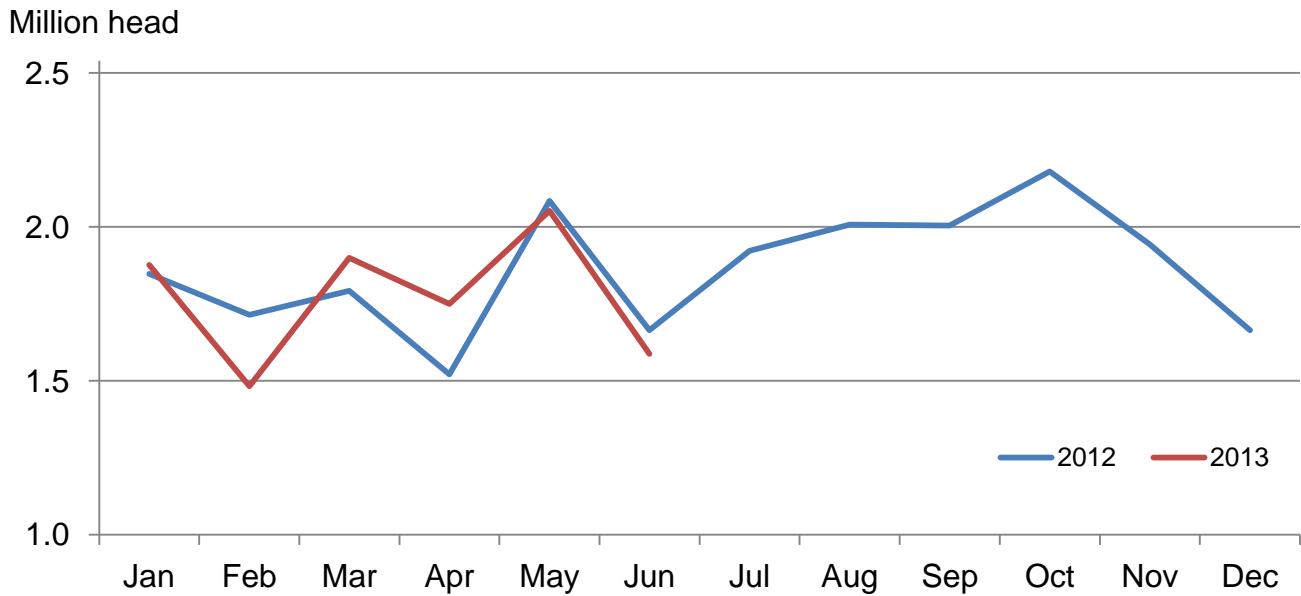
Million head



Number of Cattle Placed on Feed on 1,000+ Capacity Feedlots by Month – States and United States: 2012 and 2013

State	During June 2012	During May 2013	During June 2013		
			Number	Percent of previous year	Percent of previous month
	(1,000 head)	(1,000 head)	(1,000 head)	(percent)	(percent)
Arizona	28	25	23	82	92
California	49	77	61	124	79
Colorado	125	170	120	96	71
Idaho	34	41	36	106	88
Iowa	61	65	47	77	72
Kansas	390	430	355	91	83
Nebraska	385	460	350	91	76
Oklahoma	53	78	49	92	63
South Dakota	28	39	27	96	69
Texas	420	570	425	101	75
Washington	36	40	39	108	98
Other States	55	57	55	100	96
United States	1,664	2,052	1,587	95	77

Number of Cattle Placed on 1000+ Capacity Feedlots – United States



Number of Cattle Placed on Feed by Weight Group on 1,000+ Capacity Feedlots by Month – States and United States: 2012 and 2013

State	During June									
	Under 600 lbs		600-699 lbs		700-799 lbs		800+ lbs		Total	
	2012	2013	2012	2013	2012	2013	2012	2013	2012	2013
	(1,000 head)	(1,000 head)	(1,000 head)	(1,000 head)	(1,000 head)	(1,000 head)	(1,000 head)	(1,000 head)	(1,000 head)	(1,000 head)
Colorado	25	30	20	15	40	30	40	45	125	120
Kansas	95	50	80	55	110	100	105	150	390	355
Nebraska	70	30	70	50	90	85	155	185	385	350
Texas	180	125	100	75	75	135	65	90	420	425
Other States	90	80	50	37	75	65	129	155	344	337
United States	460	315	320	232	390	415	494	625	1,664	1,587

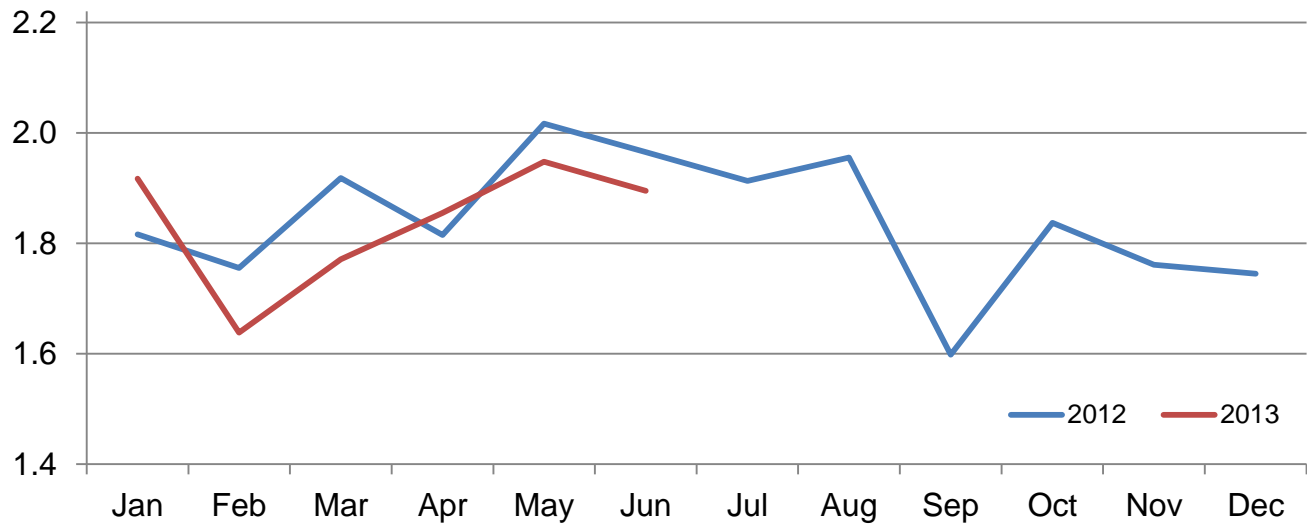
State	During May									
	Under 600 lbs		600-699 lbs		700-799 lbs		800+ lbs		Total	
	2012	2013	2012	2013	2012	2013	2012	2013	2012	2013
	(1,000 head)	(1,000 head)	(1,000 head)	(1,000 head)	(1,000 head)	(1,000 head)	(1,000 head)	(1,000 head)	(1,000 head)	(1,000 head)
Colorado	35	30	30	20	45	50	70	70	180	170
Kansas	90	55	90	70	130	130	135	175	445	430
Nebraska	70	50	60	55	130	130	200	225	460	460
Texas	220	160	125	105	140	155	95	150	580	570
Other States	105	95	60	55	85	92	169	180	419	422
United States	520	390	365	305	530	557	669	800	2,084	2,052

Number of Cattle Marketed on 1,000+ Capacity Feedlots by Month – States and United States: 2012 and 2013

State	During June 2012	During May 2013	During June 2013		
			Number	Percent of previous year	Percent of previous month
	(1,000 head)	(1,000 head)	(1,000 head)	(percent)	(percent)
Arizona	30	27	27	90	100
California	56	54	53	95	98
Colorado	170	150	150	88	100
Idaho	43	45	45	105	100
Iowa	77	72	75	97	104
Kansas	415	410	395	95	96
Nebraska	465	510	480	103	94
Oklahoma	51	61	53	104	87
South Dakota	47	45	41	87	91
Texas	500	465	480	96	103
Washington	45	45	48	107	107
Other States	66	64	48	73	75
United States	1,965	1,948	1,895	96	97

Number of Cattle Marketed on 1,000+ Capacity Feedlots – United States

Million head



Other Disappearance on 1,000+ Capacity Feedlots by Month – States and United States: 2012 and 2013

State	During June 2012 (1,000 head)	During May 2013 (1,000 head)	During June 2013		
			Number (1,000 head)	Percent of previous year (percent)	Percent of previous month (percent)
Arizona	1	1	1	100	100
California	3	3	3	100	100
Colorado	5	20	10	200	50
Idaho	1	1	1	100	100
Iowa	4	3	2	50	67
Kansas	15	20	10	67	50
Nebraska	10	20	10	100	50
Oklahoma	2	2	1	50	50
South Dakota	1	4	1	100	25
Texas	20	15	15	75	100
Washington	1	1	2	200	200
Other States	3	10	7	233	70
United States	66	100	63	95	63

Number on Feed by Class on 1,000+ Capacity Feedlots by Quarter – States and United States: 2012 and 2013

State	Steers and steer calves			Heifers and heifer calves			Cows and bulls		
	Jul 1, 2012	Apr 1, 2013	Jul 1, 2013	Jul 1, 2012	Apr 1, 2013	Jul 1, 2013	Jul 1, 2012	Apr 1, 2013	Jul 1, 2013
	(1,000 Head)	(1,000 Head)	(1,000 Head)	(1,000 Head)	(1,000 Head)	(1,000 Head)	(1,000 Head)	(1,000 Head)	(1,000 Head)
Arizona	265	271	262	14	7	5	0	0	0
California	415	420	445	64	59	68	1	1	2
Colorado	645	610	590	320	365	325	5	5	5
Idaho	127	122	102	69	91	92	4	2	1
Iowa	445	430	430	175	200	150	0	0	0
Kansas	1,070	1,160	1,070	975	925	930	5	5	10
Nebraska	1,360	1,530	1,355	890	860	810	20	30	15
Oklahoma	200	195	200	120	110	105	0	0	0
South Dakota	121	123	105	71	91	71	18	16	24
Texas	1,630	1,600	1,560	1,039	989	999	1	1	1
Washington	133	144	104	76	86	96	1	3	3
Other States	325	309	304	105	147	128	1	2	1
United States	6,736	6,914	6,527	3,918	3,930	3,779	56	65	62

Terms and Definitions of Cattle on Feed Estimates

Cattle on feed are animals being fed a ration of grain, silage, hay and/or protein supplement for slaughter market that are expected to produce a carcass that will grade select or better. It excludes cattle being "backgrounded only" for later sale as feeders or later placement in another feedlot.

Placements are cattle put into a feedlot, fed a ration which will produce a carcass that will grade select or better, and are intended for the slaughter market.

Marketings are cattle shipped out of feedlots to a slaughter market.

Other disappearance includes death loss, movement from feedlots to pasture, and shipments to other feedlots for further feeding.

Reliability of Cattle on Feed Estimates

Survey Procedures: During January and July all known feedlots in the United States with capacity of 1,000 or more head are surveyed to provide data for cattle on feed estimates. During the other months, all known feedlots from 16 States are surveyed. The 16 States account for approximately 98 percent of the cattle on feed in feedlots with capacity of 1,000 or more head. Individual State estimates are published monthly for 11 of the 16 States. Data collected from the remaining 5 States are used to establish the "Other States" estimates. These 5 States include Illinois, Minnesota, New Mexico, Oregon, and Wyoming. The "Other States" category represents all cattle on feed with a capacity of 1,000 or more head for the rest of the United States.

Estimating Procedures: These cattle on feed estimates were prepared by the Agricultural Statistics Board after reviewing recommendations and analysis submitted by each State office. Regional and State survey data were reviewed for reasonableness with each other and with estimates from the previous month when establishing the current estimates.

Revision Policy: Revisions to previous estimates are made to improve month to month relationships. Estimates for the previous month are subject to revision in all States each month when current estimates are made. In February, all monthly estimates for the previous year, and the number of feedlots and annual marketings from two years ago are reviewed and subject to revisions. The reviews are primarily based on slaughter data, state check-off or brand data, and any other data that may have been received after the original estimate was made. Estimates will also be reviewed after data from the Census of Agriculture are available. No revisions will be made after that date and estimates become final.

Reliability: Since all 1,000+ capacity cattle on feed operators in every State are not included in the monthly survey, survey estimates are subject to sampling variability. Survey results are also subject to non-sampling errors such as omissions, duplications, and mistakes in reporting, recording, and processing the data. The effects of these errors cannot be measured directly. They are minimized through rigid quality controls in the data collection process and through a careful review of all reported data for consistency and reasonableness.

To assist users in evaluating the reliability of estimates in this report, the "**Root Mean Square Error**" is shown for selected items in the table on the following page. The "Root Mean Square Error" is a statistical measure based on past performance and is computed using the differences between first and latest estimates. The "Root Mean Square Error" for cattle on feed inventory estimates over the past 24 months is 0.1 percent. This means that chances are 2 out of 3 that the final estimate will not be above or below the current estimate of 10.4 million head by more than 0.1 percent. Chances are 9 out of 10 that the difference will not exceed 0.3 percent.

The table on the following page shows a 24 month record of the range of differences between first and latest estimates for selected items. Using estimates of number on feed as an example, changes between the first estimate and the latest estimate during the past 24 months have averaged 9,000 head, ranging from 0 to 47,000 head. During this period the initial estimate has been above the latest estimate 7 times and has been below the latest estimate 3 times. This does not imply that the initial estimate is likely to understate or overstate final inventory.

Reliability of Monthly Cattle on Feed Estimates

[Based on data for the past 24 months]

Item	Root mean square error	90 percent confidence level	Difference between first and latest estimate				
			Average	Smallest	Largest	Months	
						Below latest	Above latest
	(percent)	(percent)	(1,000)	(1,000)	(1,000)	(number)	(number)
Number on feed	0.1	0.3	9	0	47	3	7
Placements	0.3	0.5	3	0	20	4	5
Marketings	0.3	0.5	2	0	20	5	3

Information Contacts

Listed below are the commodity specialists in the Livestock Branch of the National Agricultural Statistics Service to contact for additional information. E-mail inquiries may be sent to nass@nass.usda.gov

Dan Kerestes, Chief, Livestock Branch	(202) 720-3570
Scott Hollis, Head, Livestock Section	(202) 690-2424
Travis Averill – Cattle, Cattle on Feed	(202) 720-3040
Doug Bounds – Hogs and Pigs	(202) 720-3106
Alissa Cowell-Mytar – Sheep and Goats	(202) 720-4751
Donnie Fike – Dairy Products	(202) 690-3236
Tiffany Hora – Livestock Slaughter	(515) 284-4340
Mike Miller – Milk Production and Milk Cows	(202) 720-3278

Access to NASS Reports

For your convenience, you may access NASS reports and products the following ways:

- All reports are available electronically, at no cost, on the NASS web site: <http://www.nass.usda.gov>
- Both national and state specific reports are available via a free e-mail subscription. To set-up this free subscription, visit <http://www.nass.usda.gov> and in the “Follow NASS” box under “Receive reports by Email,” click on “National” or “State” to select the reports you would like to receive.

For more information on NASS surveys and reports, call the NASS Agricultural Statistics Hotline at (800) 727-9540, 7:30 a.m. to 4:00 p.m. ET, or e-mail: nass@nass.usda.gov.

The United States Department of Agriculture (USDA) prohibits discrimination in all its programs and activities on the basis of race, color, national origin, age, disability, and where applicable, sex, marital status, familial status, parental status, religion, sexual orientation, political beliefs, genetic information, reprisal, or because all or a part of an individual's income is derived from any public assistance program. (Not all prohibited bases apply to all programs.) Persons with disabilities who require alternative means for communication of program information (Braille, large print, audiotape, etc.) should contact USDA's TARGET Center at (202) 720-2600 (voice and TDD).

To file a complaint of discrimination, write to USDA, Assistant Secretary for Civil Rights, Office of the Assistant Secretary for Civil Rights, 1400 Independence Avenue, S.W., Stop 9410, Washington, DC 20250-9410, or call toll-free at (866) 632-9992 (English) or (800) 877-8339 (TDD) or (866) 377-8642 (English Federal-relay) or (800) 845-6136 (Spanish Federal-relay). USDA is an equal opportunity provider and employer.